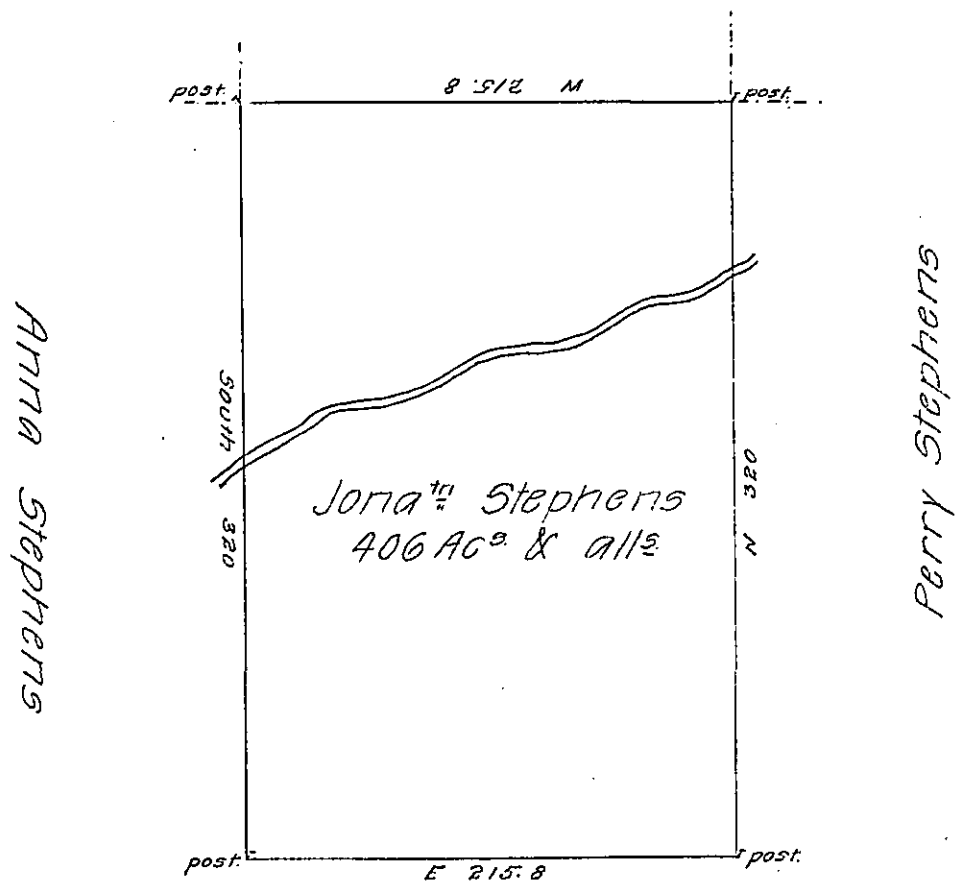


CHARLES MARSHAL



By virtue of a warrant dated 3<sup>d</sup> of September 1792 Surveyed  
 the tenth day of November 1792 unto Jonathan Stephens the  
 above described tract of four hundred and six acres of land  
 & Allowance situated on a branch of Mahopeny Creek in North-  
 wa. Courty

By Wm Montgomery D.S<sup>n</sup>

To Daniel Brodhead Esqr.

Surv<sup>r</sup>. Gen<sup>l</sup>. of Pensylv<sup>a</sup>.

IN TESTIMONY that the above is a copy of the original remaining on file in  
 the Department of Internal Affairs of Pennsylvania, made  
 conformably to an Act of Assembly approved the 16th day of  
 February, 1833, I have hereunto set my Hand and caused  
 the Seal of said Department to be affixed at Harrisburg,  
 this seventh day of March 1907.

*Laurel Perry*  
 Secretary of Internal Affairs.